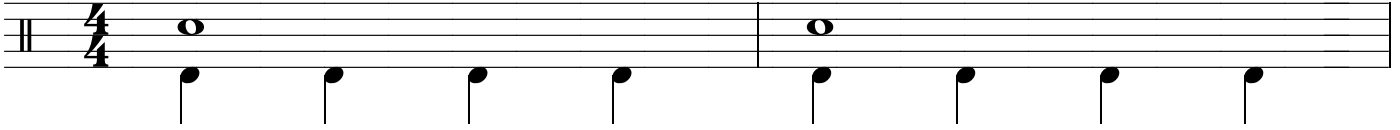


Table de temps simplifiée.

○ = main droite | = main gauche

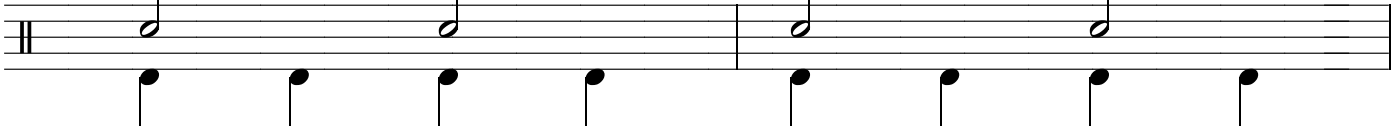
Rondes
4 temps

○ 1 (2) (3) (4) | 1 (2) (3) (4)



Blanches
2 temps

○ 1 (2) | 3 (4) ○ 1 (2) | 3 (4)



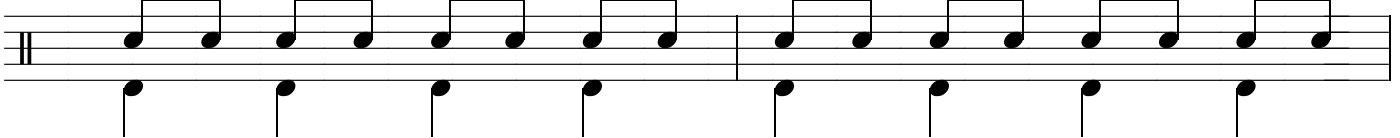
Noires
1 temps

○ 1 | 2 3 4 ○ 1 | 2 3 4



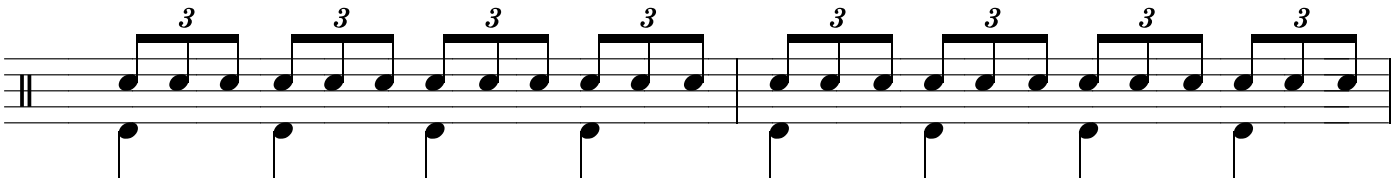
Croches
1/2 temps

○ | & | & | & | & | ○ | & | & | & | &



Triolets de croches
1/3 de temps

○ | & a | & a | & a | & a | ○ | & a | & a | & a | & a



Doubles croches
1/4 de temps

○ | i & a | i & a | i & a | i & a | ○ | i & a | i & a | i & a | i & a

