

Slow blues - shuffle - half-time shuffle

A) Slow blues

Chaque temps est divisé en un triolet

Triolets joués au charley

Musical notation for 'Triolets joués au charley'. It features a treble clef and a 4/4 time signature. The melody consists of four groups of eighth notes, each marked with a '3' above it to indicate a triplet. The first group is a quarter note triplet, and the following three are eighth note triplets. The piece concludes with a double bar line and a 12/8 time signature.

Même rythme, écriture différente

Musical notation for 'Même rythme, écriture différente'. It features a treble clef and a 12/8 time signature. The melody consists of four groups of eighth notes, each marked with a '2' above it to indicate a pair. The first group is a quarter note pair, and the following three are eighth note pairs. The piece concludes with a double bar line and a 4/4 time signature.

Variation 1

Musical notation for 'Variation 1'. It features a treble clef and a 4/4 time signature. The melody consists of four groups of eighth notes, each marked with a '3' above it to indicate a triplet. The first group is a quarter note triplet, and the following three are eighth note triplets. The piece concludes with a double bar line.

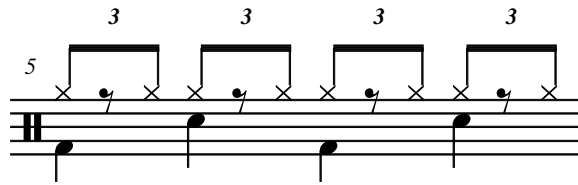
Variation 2

Musical notation for 'Variation 2'. It features a treble clef and a 4/4 time signature. The melody consists of four groups of eighth notes, each marked with a '3' above it to indicate a triplet. The first group is a quarter note triplet, and the following three are eighth note triplets. The piece concludes with a double bar line.

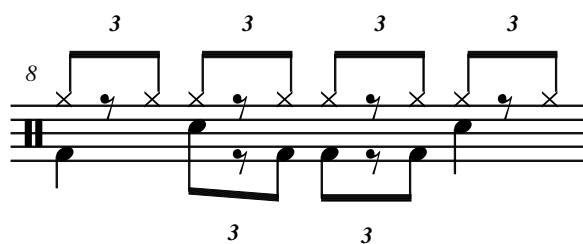
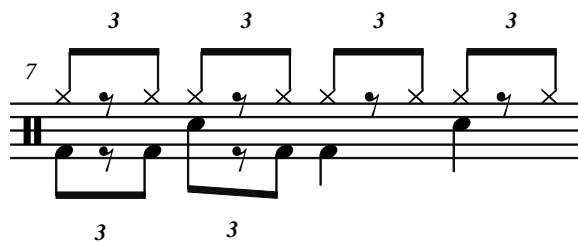
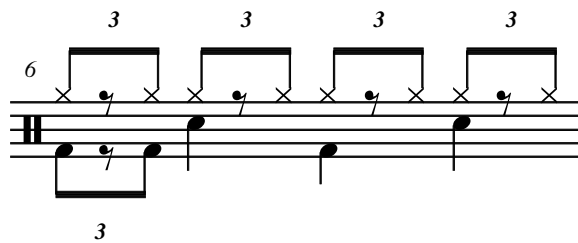
Slow blues - shuffle - half-time shuffle

B) Shuffle

La 2e croche du triolet n'est pas jouée !



Quelques variations :



Slow blues - shuffle - half-time shuffle

C) Half-time shuffle

La caisse claire n'est plus jouée sur le 2 et le 4 mais sur le 3
Grosse caisse sur le 1

Musical notation for exercise 9, showing a half-time shuffle pattern. The notation consists of two staves. The top staff has four groups of three eighth notes, each marked with a '3' above it. The bottom staff has a bass drum on the first beat and a snare drum on the third beat of each measure.

Quelques variations :

Musical notation for exercise 10, showing a variation of the half-time shuffle pattern. The notation consists of two staves. The top staff has four groups of three eighth notes, each marked with a '3' above it. The bottom staff has a bass drum on the first beat and a snare drum on the third beat of each measure. A triplet of eighth notes is shown in the second measure of the bottom staff.

Musical notation for exercise 11, showing another variation of the half-time shuffle pattern. The notation consists of two staves. The top staff has four groups of three eighth notes, each marked with a '3' above it. The bottom staff has a bass drum on the first beat and a snare drum on the third beat of each measure. A triplet of eighth notes is shown in the second measure of the bottom staff.

Musical notation for exercise 12, showing a final variation of the half-time shuffle pattern. The notation consists of two staves. The top staff has four groups of three eighth notes, each marked with a '3' above it. The bottom staff has a bass drum on the first beat and a snare drum on the third beat of each measure. A triplet of eighth notes is shown in the second measure of the bottom staff.